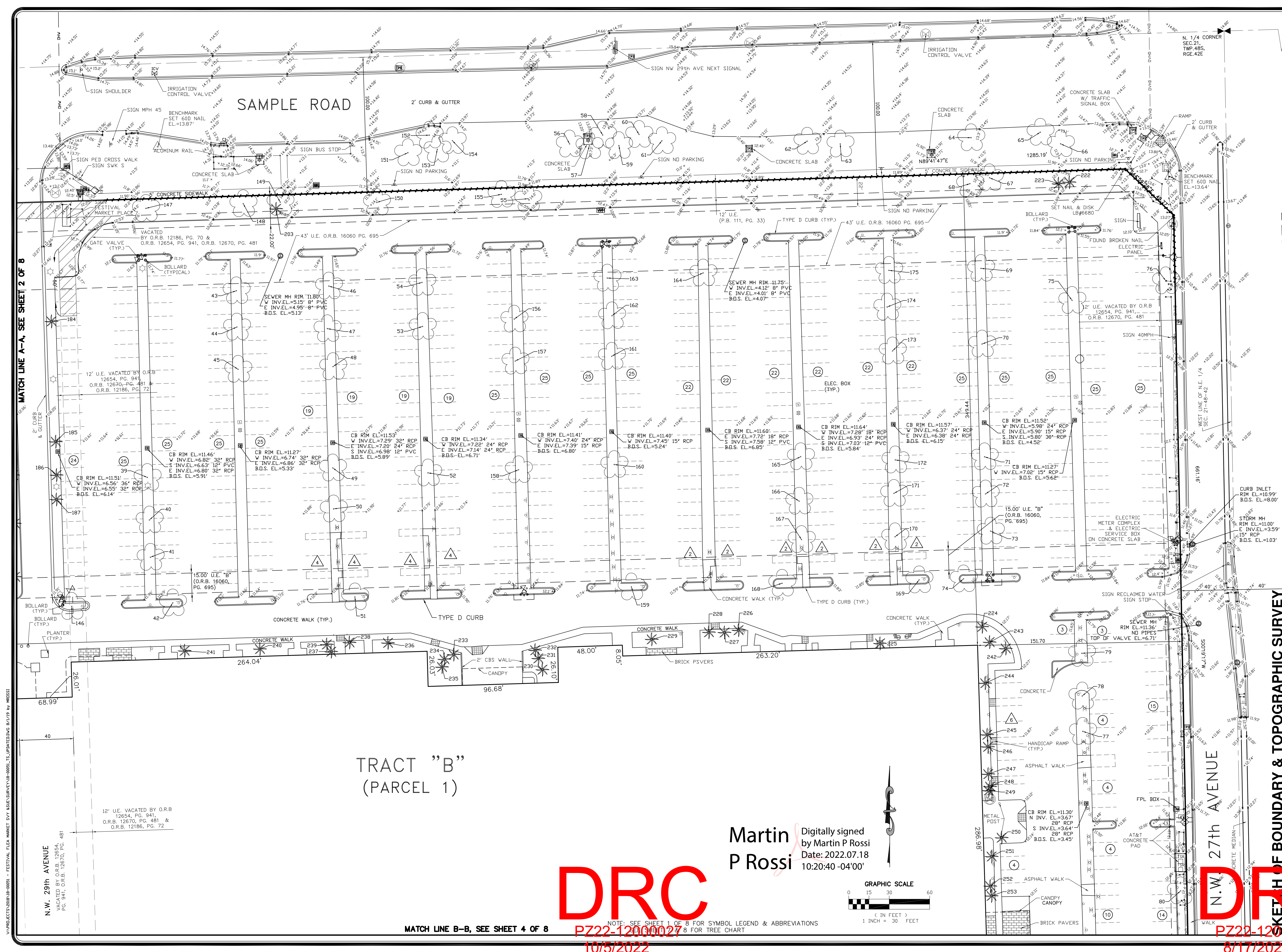


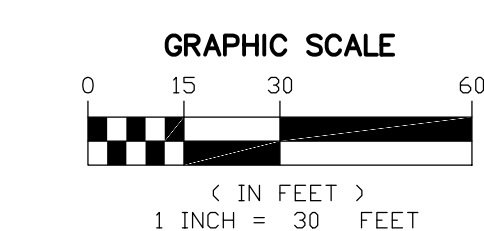
MATCH LINE A-A, SEE SHEET 2 OF 8

N.W. 29th AVENUE
VACATED BY O.R.B. 12654,
PG. 941, O.R.B. 12670, PG. 481
&
O.R.B. 12186, PG. 72



TRACT "B"
(PARCEL 1)

Martin P Rossi
Digitally signed
by Martin P Rossi
Date: 2022.07.18
10:20:40 -04'00'



MATCH LINE B-B, SEE SHEET 4 OF 8

DRC
PZ22-12000027
10/5/2022

NOTE: SEE SHEET 1 OF 8 FOR SYMBOL LEGEND & ABBREVIATIONS
& FOR TREE CHART

SKETCH OF BOUNDARY & TOPOGRAPHIC SURVEY

FESTIVAL FLEA MARKET

POMPANO BEACH - FLORIDA

MILLER LEGG
South Florida Office: 5747 N. Andrews Way
Ft. Lauderdale, Florida 33309-2984
954-436-7000 Fax: 954-436-8664
www.millerlegg.com

CERTIFICATE OF AUTHORIZATION	
EB7318 LB6680 LC0332	PROJECT / FILE NO.
1	00051
DRAWING NO.	3
DATE	8/17/2022